

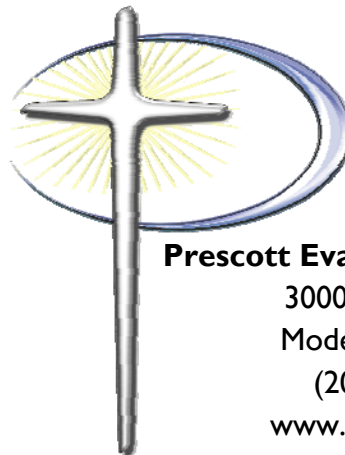
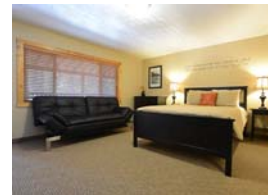
• —————

## The Lodge

### Christian Retreat Center

miwuklodge.com

*Escape the daily grind and get away for a relaxing weekend together in beautiful Mi-Wuk Village (nestled in the Sierra Mountains 4 miles past Twain Hart, 15 miles from Pinecrest). Enjoy adult conversation with friends, opportunities to grow together in your relationship with God, and places for personal time as a couple.*



**Prescott Evangelical Free Church**  
3000 Prescott Road  
Modesto CA 95350  
(209) 529-7200  
[www.prescottefc.com](http://www.prescottefc.com)



## Prescott Church Married Couples' Getaway 2014

June 6-8 at

**The Lodge**

**Christian Retreat Center**

(Mi-Wuk Village, CA)

# Married Couples' Getaway Weekend

## REGISTRATION FORM



### Directions:

Head out through Oakdale and continue on Highway 108 past Twain Hart and Sugarpine. As you drive through Mi-Wuk, The Lodge will be on the left side. Distance is about 60 miles from Modesto (47.6 miles from downtown Oakdale).



### Check in time is 4pm on Friday.

Due to the variety of arrival times on Friday night, we do not provide a dinner. Please make your own arrangements to suit your needs. We will have games out if you want to enjoy some fellowship with the group Friday night. There will be no planned group activities until Saturday.



**Meals:** Saturday night's dinner is included in your registration. In order to give flexible options for everyone's budget, all other meals are on your own. The Lodge has a café, which serves breakfast and lunch items. Alternatively, you can bring your own favorites to prepare in the meeting room kitchen. There are also several restaurants nearby. Coffee and tea will be available in the meeting room for each meeting.

### Accommodations:

#### The Lodge Christian Retreat Center

There are a total of 15 rooms with king or queen beds available: 6 standard rooms with king beds, 4 standard rooms with queen beds, 4 fireplace rooms with king beds, and 1 suite with king bed. (For pricing details, see registration). If you have a preference be sure to reserve early. Preferences will be assigned on a first-come, first served basis.

**All rooms include:** king or queen bed (see registration for price differences), bathroom/shower, coffee maker, iron/board, hair dryer, and free WIFI.

**2 of the Standard King rooms** are ADA Accessible.

**The other 4 Standard King rooms** have an optional adjoining kitchenette available as an add-on for \$15 per night.

**The 4 Fireplace King rooms**, have all the above amenities with a king bed, plus a wood burning fireplace.

**The Deluxe suite** includes: a king bed, fully equipped kitchen, family and living room, large tub and shower, TV, DVD player, sofa & loveseat

### Registration cost Includes:

- ♦ Room for 2 nights
- ♦ 1 catered meal together on Saturday night (breakfast and lunches are on your own.)
- ♦ Meeting room and facilities to prepare personal meals
- ♦ Any study materials and group activities
- ♦ Enjoyment of amenities and beautiful surroundings.

Name: \_\_\_\_\_

Phone: \_\_\_\_\_

Email: \_\_\_\_\_

☐ **Standard King room registration**  
**\$210.00 total per couple**

☐ I need ADA accessible if available

☐ Add the kitchenette for \$30 total

☐ **Standard Queen room registration**  
**\$200.00 total per couple**

☐ **Fireplace King room registration**  
**\$230.00 total per couple**

☐ **Deluxe Suite registration**  
**\$270.00 total per couple**

☐ I am enclosing full payment **or**

☐ I am enclosing my deposit of \$\_\_\_\_\_ with my registration. *I understand that my room is not reserved until a deposit is received.*

\*The deposit to hold your room is a minimum 50% of registration. If you must cancel your reservation, deposits can only be returned if we are able to find another couple to use your room.

**\*\*Please make checks payable to PEFC and mark "couples" on the memo line.**