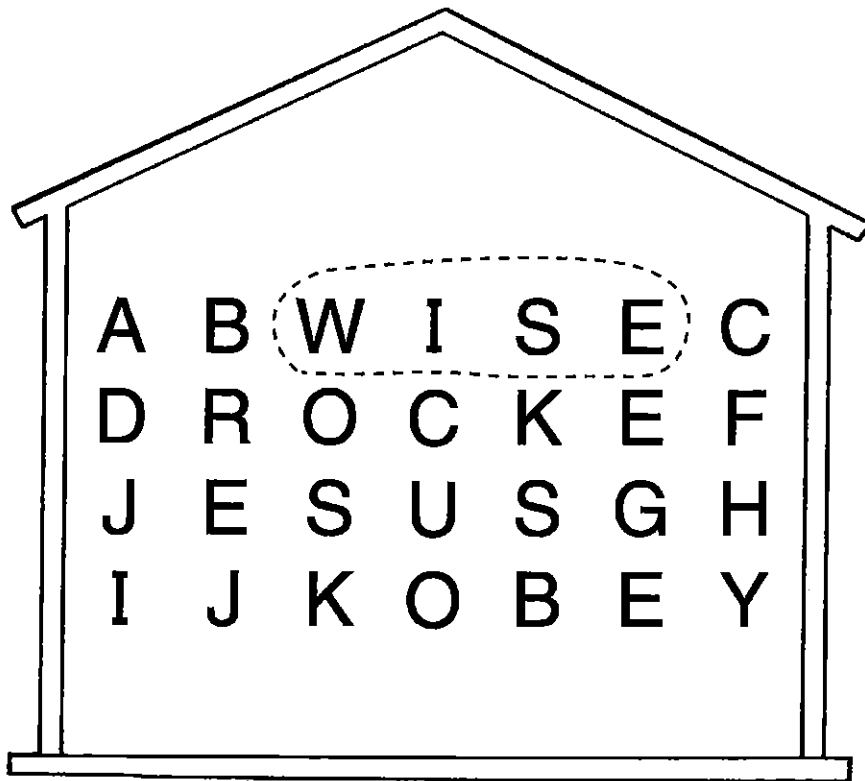
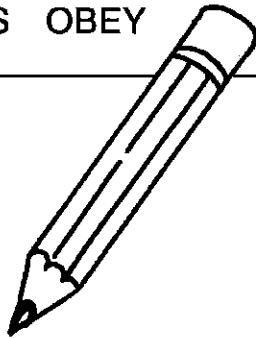


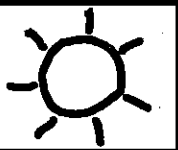
Obeying Jesus is wise.

Find the hidden words in the puzzle below.

WISE ROCK JESUS OBEY



Children's Worship Bulletin™



Ages 3-6

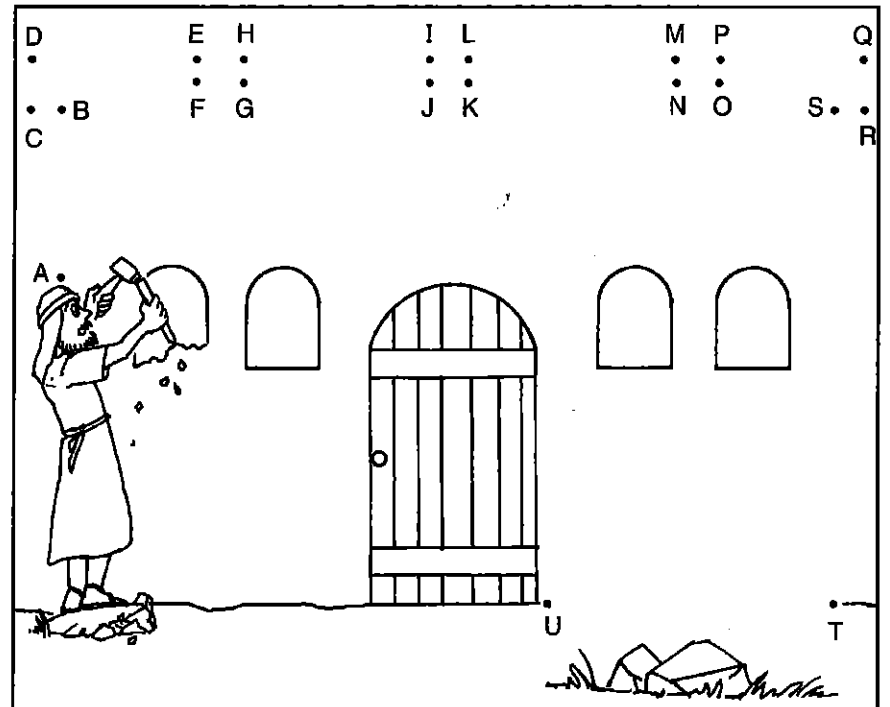
Matthew 7:21-29

The Wise and Foolish Builders

Jesus said, "Everyone who puts My words into practice is like a wise builder."

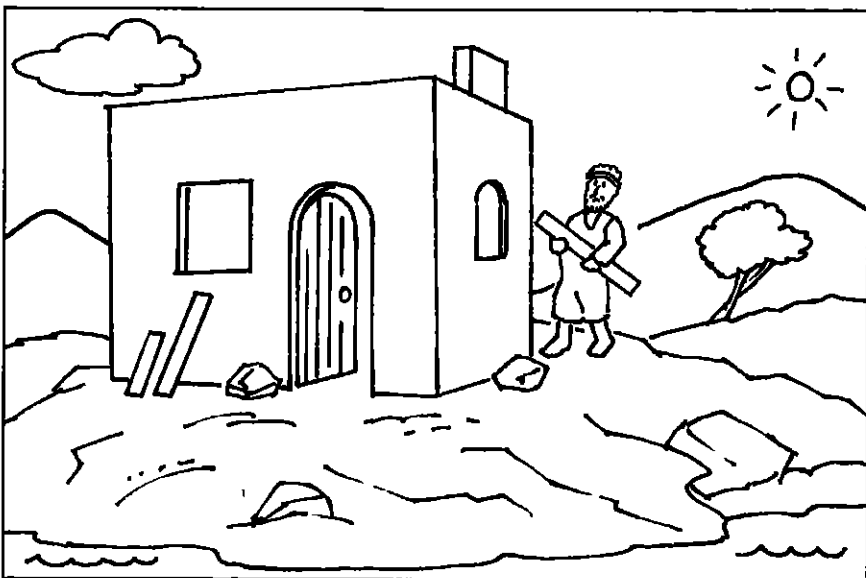
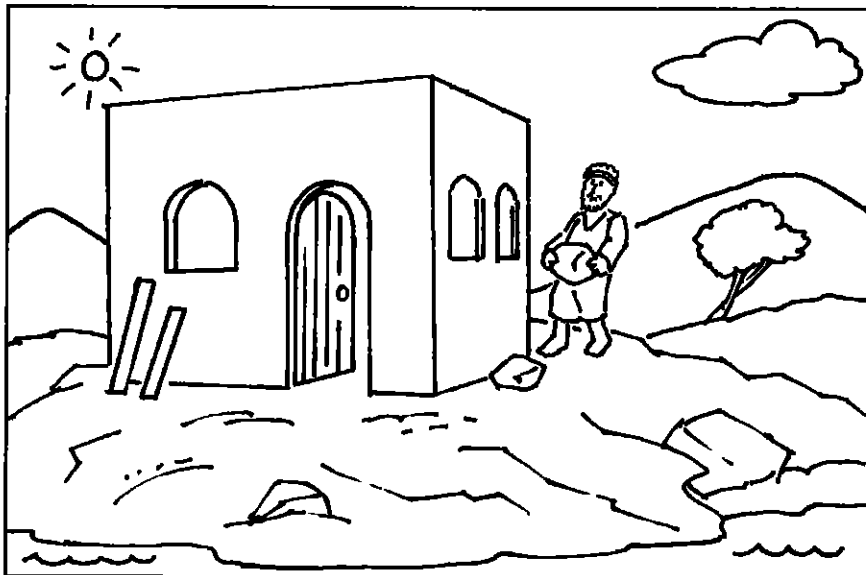
Connect the dots.

ABCDEFGHIJKLMN OPQRSTU



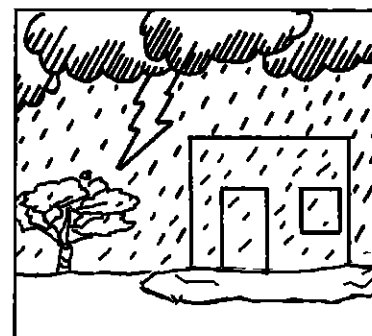
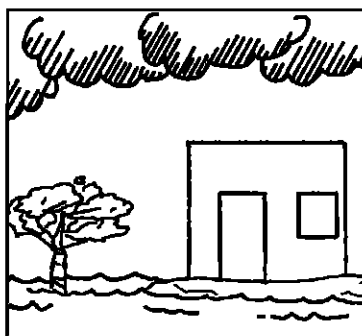
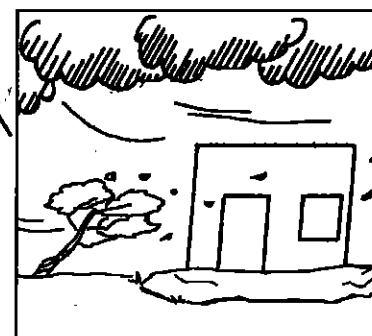
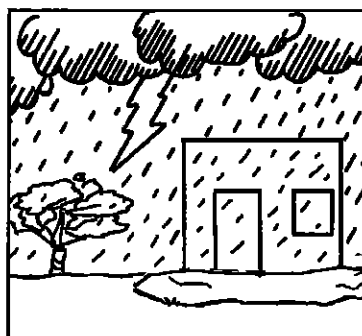
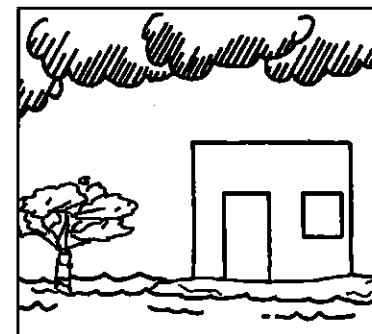
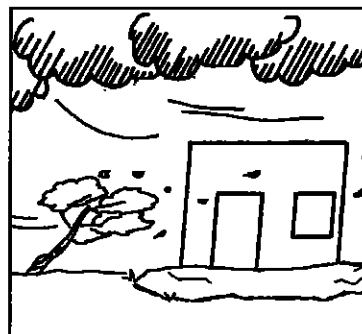
A wise builder builds his house upon a rock.

Circle 7 differences in the bottom picture.



Wind, rain and water did not destroy the house on the rock.

Match the pictures below.





What happened when Jesus finished preaching?

Add and subtract letters to find out.

1 - ent + - ouse + - appl
= _____

2 - at + - oster + - atch +
 - og + - tar = _____

3 - ll + - attle + - pn = _____

4 - hmer + - nt + - bra +
 - oor = _____

1

2

3

4

•Children's Worship Bulletin™•

Ages 7-12

Matthew 7:21-29

The Wise and Foolish Builders

Jesus was preaching to His followers.
Who did He say would enter the kingdom of heaven?



Use this clock code to fill in the blanks.

" _____

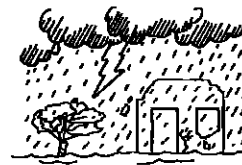


What did Jesus say His followers will be like?

Color in the spaces found at the graph points listed below.
Then write the remaining letters in order on the lines.

“ _____

Row	Column
1	⊕ ⊕ ⊕
2	⊕ ⊕ ⊕ ⊕ ⊕ ⊕
3	⊕ ⊕ ⊕ ⊕ ⊕ ⊕
4	⊕ ⊕ ⊕ ⊕ ⊕ ⊕
5	⊕ ⊕ ⊕ ⊕ ⊕ ⊕
6	⊕ ⊕ ⊕ ⊕ ⊕ ⊕ ⊕ ⊕
7	⊕ ⊕ ⊕ ⊕ ⊕ ⊕
8	⊕ ⊕
9	⊕ ⊕
10	⊕ ⊕ ⊕ ⊕ ⊕
11	⊕ ⊕ ⊕ ⊕ ⊕
12	⊕ ⊕ ⊕ ⊕ ⊕
13	⊕ ⊕ ⊕ ⊕ ⊕



What about those who do not follow the Lord? Everyone who hears the words of Jesus and does not put them into practice is like the ...

Find the answer to each equation. Write the words on the line with the number that matches the answer.

_____ 2 _____ 4 _____ 6

_____ 8 _____ 10 _____ 12

_____ 14 _____ 16 _____ 18

_____ 20 _____ 22 _____ 24